

Quality ID #144 (CBE 0383): Oncology: Medical and Radiation – Plan of Care for Pain

2025 COLLECTION TYPE: **MIPS CLINICAL QUALITY MEASURES (CQMS)**

MEASURE TYPE: Process – High Priority

DESCRIPTION:
Percentage of visits for patients, regardless of age, with a diagnosis of cancer currently receiving chemotherapy or radiation therapy who report having pain with a documented plan of care to address pain.

INSTRUCTIONS:
This measure is to be submitted at each denominator eligible visit occurring during the performance period for patients with a diagnosis of cancer and in which pain is present who are seen during the performance period. It is anticipated that eligible clinicians providing care for patients with cancer will submit this measure.

NOTE: Patient encounters for this measure conducted via telehealth (including but not limited to encounters coded with GQ, GT, POS 02, POS 10) are allowable for Submission Criteria 1. Please note that effective January 1, 2025, while a measure may be denoted as telehealth eligible, specific denominator codes within the encounter may no longer be eligible due to changes outlined in the CY 2024 PFS Final Rule List of Medicare Telehealth Services.

Measure Submission Type:

The listed denominator criteria is used to identify the intended patient population. The numerator options included in this specification are used to submit the quality actions allowed by the measure. The quality data codes listed do not need to be submitted for registry submissions; however, these codes may be submitted for those registries that utilize claims data.

THERE ARE TWO SUBMISSION CRITERIA FOR THIS MEASURE:

1) All visits for patients, regardless of age, with a diagnosis of cancer currently receiving chemotherapy who report having pain

OR

2) All visits for patients, regardless of age, with a diagnosis of cancer currently receiving radiation therapy who report having pain

SUBMISSION CRITERIA 1: ALL VISITS FOR PATIENTS, REGARDLESS OF AGE, WITH A DIAGNOSIS OF CANCER CURRENTLY RECEIVING CHEMOTHERAPY WHO REPORT HAVING PAIN

DENOMINATOR (SUBMISSION CRITERIA 1):

All visits for patients, regardless of age, with a diagnosis of cancer currently receiving chemotherapy who report having pain

Denominator Criteria (Eligible Cases):

All eligible instances when pain severity quantified; pain present (**1125F**) is submitted in the numerator for Measure #143

AND

Diagnosis for cancer (ICD-10-CM): C00.0, C00.1, C00.2, C00.3, C00.4, C00.5, C00.6, C00.8, C00.9, C01, C02.0, C02.1, C02.2, C02.3, C02.4, C02.8, C02.9, C03.0, C03.1, C03.9, C04.0, C04.1, C04.8, C04.9, C05.0, C05.1, C05.2, C05.8, C05.9, C06.0, C06.1, C06.2, C06.80, C06.89, C06.9, C07, C08.0, C08.1, C08.9, C09.0,

C09.1, C09.8, C09.9, C10.0, C10.1, C10.2, C10.3, C10.4, C10.8, C10.9, C11.0, C11.1, C11.2, C11.3, C11.8, C11.9, C12, C13.0, C13.1, C13.2, C13.8, C13.9, C14.0, C14.2, C14.8, C15.3, C15.4, C15.5, C15.8, C15.9, C16.0, C16.1, C16.2, C16.3, C16.4, C16.5, C16.6, C16.8, C16.9, C17.0, C17.1, C17.2, C17.3, C17.8, C17.9, C18.0, C18.1, C18.2, C18.3, C18.4, C18.5, C18.6, C18.7, C18.8, C18.9, C19, C20, C21.0, C21.1, C21.2, C21.8, C22.0, C22.1, C22.2, C22.3, C22.4, C22.7, C22.8, C22.9, C23, C24.0, C24.1, C24.8, C24.9, C25.0, C25.1, C25.2, C25.3, C25.4, C25.7, C25.8, C25.9, C26.0, C26.1, C26.9, C30.0, C30.1, C31.0, C31.1, C31.2, C31.3, C31.8, C31.9, C32.0, C32.1, C32.2, C32.3, C32.8, C32.9, C33, C34.00, C34.01, C34.02, C34.10, C34.11, C34.12, C34.2, C34.30, C34.31, C34.32, C34.80, C34.81, C34.82, C34.90, C34.91, C34.92, C37, C38.0, C38.1, C38.2, C38.3, C38.4, C38.8, C39.0, C39.9, C40.00, C40.01, C40.02, C40.10, C40.11, C40.12, C40.20, C40.21, C40.22, C40.30, C40.31, C40.32, C40.80, C40.81, C40.82, C40.90, C40.91, C40.92, C41.0, C41.1, C41.2, C41.3, C41.4, C41.9, C43.0, C43.10, C43.111, C43.112, C43.121, C43.122, C43.20, C43.21, C43.22, C43.30, C43.31, C43.39, C43.4, C43.51, C43.52, C43.59, C43.60, C43.61, C43.62, C43.70, C43.71, C43.72, C43.8, C43.9, C44.00, C44.01, C44.02, C44.09, C44.101, C44.1021, C44.1022, C44.1091, C44.1092, C44.111, C44.1121, C44.1122, C44.1191, C44.1192, C44.121, C44.1221, C44.1222, C44.1291, C44.1292, C44.131, C44.1321, C44.1322, C44.1391, C44.1392, C44.191, C44.1921, C44.1922, C44.1991, C44.1992, C44.201, C44.202, C44.209, C44.211, C44.212, C44.219, C44.221, C44.222, C44.229, C44.291, C44.292, C44.299, C44.300, C44.301, C44.309, C44.310, C44.311, C44.319, C44.320, C44.321, C44.329, C44.390, C44.391, C44.399, C44.40, C44.41, C44.42, C44.49, C44.500, C44.501, C44.509, C44.510, C44.511, C44.519, C44.520, C44.521, C44.529, C44.590, C44.591, C44.599, C44.601, C44.602, C44.609, C44.611, C44.612, C44.619, C44.621, C44.622, C44.629, C44.691, C44.692, C44.699, C44.701, C44.702, C44.709, C44.711, C44.712, C44.719, C44.721, C44.722, C44.729, C44.791, C44.792, C44.799, C44.80, C44.81, C44.82, C44.89, C44.90, C44.91, C44.92, C44.99, C45.0, C45.1, C45.2, C45.7, C45.9, C46.0, C46.1, C46.2, C46.3, C46.4, C46.50, C46.51, C46.52, C46.7, C46.9, C47.0, C47.10, C47.11, C47.12, C47.20, C47.21, C47.22, C47.3, C47.4, C47.5, C47.6, C47.8, C47.9, C48.0, C48.1, C48.2, C48.8, C49.0, C49.A0, C49.A1, C49.A2, C49.A3, C49.A4, C49.A5, C49.A9, C49.10, C49.11, C49.12, C49.20, C49.21, C49.22, C49.3, C49.4, C49.5, C49.6, C49.8, C49.9, C4A.0, C4A.10, C4A.111, C4A.112, C4A.121, C4A.122, C4A.20, C4A.21, C4A.22, C4A.30, C4A.31, C4A.39, C4A.4, C4A.51, C4A.52, C4A.59, C4A.60, C4A.61, C4A.62, C4A.70, C4A.71, C4A.72, C4A.8, C4A.9, C50.011, C50.012, C50.019, C50.021, C50.022, C50.029, C50.111, C50.112, C50.119, C50.121, C50.122, C50.129, C50.211, C50.212, C50.219, C50.221, C50.222, C50.229, C50.311, C50.312, C50.319, C50.321, C50.322, C50.329, C50.411, C50.412, C50.419, C50.421, C50.422, C50.429, C50.511, C50.512, C50.519, C50.521, C50.522, C50.529, C50.611, C50.612, C50.619, C50.621, C50.622, C50.629, C50.811, C50.812, C50.819, C50.821, C50.822, C50.829, C50.911, C50.912, C50.919, C50.921, C50.922, C50.929, C51.0, C51.1, C51.2, C51.8, C51.9, C52, C53.0, C53.1, C53.8, C53.9, C54.0, C54.1, C54.2, C54.3, C54.8, C54.9, C55, C56.1, C56.2, C56.3, C56.9, C57.00, C57.01, C57.02, C57.10, C57.11, C57.12, C57.20, C57.21, C57.22, C57.3, C57.4, C57.7, C57.8, C57.9, C58, C60.0, C60.1, C60.2, C60.8, C60.9, C61, C62.00, C62.01, C62.02, C62.10, C62.11, C62.12, C62.90, C62.91, C62.92, C63.00, C63.01, C63.02, C63.10, C63.11, C63.12, C63.2, C63.7, C63.8, C63.9, C64.1, C64.2, C64.9, C65.1, C65.2, C65.9, C66.1, C66.2, C66.9, C67.0, C67.1, C67.2, C67.3, C67.4, C67.5, C67.6, C67.7, C67.8, C67.9, C68.0, C68.1, C68.8, C68.9, C69.00, C69.01, C69.02, C69.10, C69.11, C69.12, C69.20, C69.21, C69.22, C69.30, C69.31, C69.32, C69.40, C69.41, C69.42, C69.50, C69.51, C69.52, C69.60, C69.61, C69.62, C69.80, C69.81, C69.82, C69.90, C69.91, C69.92, C70.0, C70.1, C70.9, C71.0, C71.1, C71.2, C71.3, C71.4, C71.5, C71.6, C71.7, C71.8, C71.9, C72.0, C72.1, C72.20, C72.21, C72.22, C72.30, C72.31, C72.32, C72.40, C72.41, C72.42, C72.50, C72.59, C72.9, C73, C74.00, C74.01, C74.02, C74.10, C74.11, C74.12, C74.90, C74.91, C74.92, C75.0, C75.1, C75.2, C75.3, C75.4, C75.5, C75.8, C75.9, C76.0, C76.1, C76.2, C76.3, C76.40, C76.41, C76.42, C76.50, C76.51, C76.52, C76.8, C77.0, C77.1, C77.2, C77.3, C77.4, C77.5, C77.8, C77.9, C78.00, C78.01, C78.02, C78.1, C78.2, C78.30, C78.39, C78.4, C78.5, C78.6, C78.7, C78.80, C78.89, C79.00, C79.01, C79.02, C79.10, C79.11, C79.19, C79.2, C79.31, C79.32, C79.40, C79.49, C79.51, C79.52, C79.60, C79.61, C79.62, C79.63, C79.70, C79.71, C79.72, C79.81, C79.82, C79.89, C79.9, C7A.00, C7A.010, C7A.011, C7A.012, C7A.019, C7A.020, C7A.021, C7A.022, C7A.023, C7A.024, C7A.025, C7A.026, C7A.029, C7A.090, C7A.091, C7A.092, C7A.093, C7A.094, C7A.095, C7A.096, C7A.098, C7A.1, C7A.8, C7B.00, C7B.01, C7B.02, C7B.03, C7B.04, C7B.09, C7B.1, C7B.8, C80.0, C80.1, C80.2, C81.00, C81.01, C81.02, C81.03, C81.04, C81.05, C81.06, C81.07, C81.08, C81.09, C81.10, C81.11, C81.12, C81.13, C81.14, C81.15, C81.16, C81.17, C81.18, C81.19, C81.20, C81.21, C81.22, C81.23, C81.24, C81.25, C81.26, C81.27, C81.28, C81.29, C81.30, C81.31, C81.32, C81.33, C81.34, C81.35, C81.36, C81.37, C81.38, C81.39, C81.40, C81.41, C81.42, C81.43, C81.44, C81.45, C81.46, C81.47, C81.48,

C81.49, C81.70, C81.71, C81.72, C81.73, C81.74, C81.75, C81.76, C81.77, C81.78, C81.79, C81.90, C81.91, C81.92, C81.93, C81.94, C81.95, C81.96, C81.97, C81.98, C81.99, C82.00, C82.01, C82.02, C82.03, C82.04, C82.05, C82.06, C82.07, C82.08, C82.09, C82.10, C82.11, C82.12, C82.13, C82.14, C82.15, C82.16, C82.17, C82.18, C82.19, C82.20, C82.21, C82.22, C82.23, C82.24, C82.25, C82.26, C82.27, C82.28, C82.29, C82.30, C82.31, C82.32, C82.33, C82.34, C82.35, C82.36, C82.37, C82.38, C82.39, C82.40, C82.41, C82.42, C82.43, C82.44, C82.45, C82.46, C82.47, C82.48, C82.49, C82.50, C82.51, C82.52, C82.53, C82.54, C82.55, C82.56, C82.57, C82.58, C82.59, C82.60, C82.61, C82.62, C82.63, C82.64, C82.65, C82.66, C82.67, C82.68, C82.69, C82.80, C82.81, C82.82, C82.83, C82.84, C82.85, C82.86, C82.87, C82.88, C82.89, C82.90, C82.91, C82.92, C82.93, C82.94, C82.95, C82.96, C82.97, C82.98, C82.99, C83.00, C83.01, C83.02, C83.03, C83.04, C83.05, C83.06, C83.07, C83.08, C83.09, C83.10, C83.11, C83.12, C83.13, C83.14, C83.15, C83.16, C83.17, C83.18, C83.19, C83.30, C83.31, C83.32, C83.33, C83.34, C83.35, C83.36, C83.37, C83.38, C83.390, C83.398, C83.50, C83.51, C83.52, C83.53, C83.54, C83.55, C83.56, C83.57, C83.58, C83.59, C83.70, C83.71, C83.72, C83.73, C83.74, C83.75, C83.76, C83.77, C83.78, C83.79, C83.80, C83.81, C83.82, C83.83, C83.84, C83.85, C83.86, C83.87, C83.88, C83.89, C83.90, C83.91, C83.92, C83.93, C83.94, C83.95, C83.96, C83.97, C83.98, C83.99, C84.00, C84.01, C84.02, C84.03, C84.04, C84.05, C84.06, C84.07, C84.08, C84.09, C84.10, C84.11, C84.12, C84.13, C84.14, C84.15, C84.16, C84.17, C84.18, C84.19, C84.40, C84.41, C84.42, C84.43, C84.44, C84.45, C84.46, C84.47, C84.48, C84.49, C84.60, C84.61, C84.62, C84.63, C84.64, C84.65, C84.66, C84.67, C84.68, C84.69, C84.7A, C84.70, C84.71, C84.72, C84.73, C84.74, C84.75, C84.76, C84.77, C84.78, C84.79, C84.90, C84.91, C84.92, C84.93, C84.94, C84.95, C84.96, C84.97, C84.98, C84.99, C84.A0, C84.A1, C84.A2, C84.A3, C84.A4, C84.A5, C84.A6, C84.A7, C84.A8, C84.A9, C84.Z0, C84.Z1, C84.Z2, C84.Z3, C84.Z4, C84.Z5, C84.Z6, C84.Z7, C84.Z8, C84.Z9, C85.10, C85.11, C85.12, C85.13, C85.14, C85.15, C85.16, C85.17, C85.18, C85.19, C85.20, C85.21, C85.22, C85.23, C85.24, C85.25, C85.26, C85.27, C85.28, C85.29, C85.80, C85.81, C85.82, C85.83, C85.84, C85.85, C85.86, C85.87, C85.88, C85.89, C85.90, C85.91, C85.92, C85.93, C85.94, C85.95, C85.96, C85.97, C85.98, C85.99, C86.00, C86.10, C86.20, C86.30, C86.40, C86.50, C86.60, C88.00, C88.20, C88.30, C88.40, C88.80, C88.90, C90.00, C90.01, C90.02, C90.10, C90.11, C90.12, C90.20, C90.21, C90.22, C90.30, C90.31, C90.32, C91.00, C91.01, C91.02, C91.10, C91.11, C91.12, C91.30, C91.31, C91.32, C91.40, C91.41, C91.42, C91.50, C91.51, C91.52, C91.60, C91.61, C91.62, C91.90, C91.91, C91.92, C91.A0, C91.A1, C91.A2, C91.Z0, C91.Z1, C91.Z2, C92.00, C92.01, C92.02, C92.10, C92.11, C92.12, C92.20, C92.21, C92.22, C92.30, C92.31, C92.32, C92.40, C92.41, C92.42, C92.50, C92.51, C92.52, C92.60, C92.61, C92.62, C92.90, C92.91, C92.92, C92.A0, C92.A1, C92.A2, C92.Z0, C92.Z1, C92.Z2, C93.00, C93.01, C93.02, C93.10, C93.11, C93.12, C93.30, C93.31, C93.32, C93.90, C93.91, C93.92, C93.Z0, C93.Z1, C93.Z2, C94.00, C94.01, C94.02, C94.20, C94.21, C94.22, C94.30, C94.31, C94.32, C94.40, C94.41, C94.42, C94.6, C94.80, C94.81, C94.82, C95.00, C95.01, C95.02, C95.10, C95.11, C95.12, C95.90, C95.91, C95.92, C96.0, C96.20, C96.21, C96.22, C96.29, C96.4, C96.5, C96.6, C96.9, C96.A, C96.Z, D37.01, D37.02, D37.030, D37.031, D37.032, D37.039, D37.04, D37.05, D37.09, D37.1, D37.2, D37.3, D37.4, D37.5, D37.6, D37.8, D37.9, D38.0, D38.1, D38.2, D38.3, D38.4, D38.5, D38.6, D39.0, D39.10, D39.11, D39.12, D39.2, D39.8, D39.9, D40.0, D40.10, D40.11, D40.12, D40.8, D40.9, D41.00, D41.01, D41.02, D41.10, D41.11, D41.12, D41.20, D41.21, D41.22, D41.3, D41.4, D41.8, D41.9, D42.0, D42.1, D42.9, D43.0, D43.1, D43.2, D43.3, D43.4, D43.8, D43.9, D44.0, D44.10, D44.11, D44.12, D44.2, D44.3, D44.4, D44.5, D44.6, D44.7, D44.9, D45, D46.0, D46.1, D46.20, D46.21, D46.22, D46.4, D46.9, D46.A, D46.B, D46.C, D46.Z, D47.1, D47.2, D47.3, D47.4, D47.9, D47.01, D47.02, D47.09, D47.Z1, D47.Z2, D47.Z9, D48.0, D48.19, D48.2, D48.3, D48.4, D48.5, D48.60, D48.61, D48.62, D48.7, D48.9, D49.0, D49.1, D49.2, D49.3, D49.4, D49.511, D49.512, D49.519, D49.59, D49.6, D49.7, D49.81, D49.89, D49.9

AND

Patient encounter during the performance period (CPT) – Service codes: 98000, 98001, 98002, 98003, 98004, 98005, 98006, 98007, 99202, 99203, 99204, 99205, 99212, 99213, 99214, 99215

AND

Patient procedure during the performance period (CPT) – Procedure codes: 50391, 51720, 96401, 96405, 96406, 96409, 96413, 96416, 96420, 96422, 96425, 96440, 96446, 96450, 96521, 96522, 96523, 96542, 96549, G0498

NUMERATOR (SUBMISSION CRITERIA 1):

Patient visits that included a documented plan of care to address pain

Numerator Instructions: A documented plan of care may include: use of opioids, nonopioid analgesics, psychological support, patient and/or family education, referral to a pain clinic, or reassessment of pain at an appropriate time interval.

Numerator Options:

OR

Performance Met:

Plan of care to address pain documented **(0521F)**

Performance Not Met:

Plan of care for pain not documented, reason not otherwise specified **(0521F with 8P)**

SUBMISSION CRITERIA 2: ALL VISITS FOR PATIENTS, REGARDLESS OF AGE, WITH A DIAGNOSIS OF CANCER CURRENTLY RECEIVING RADIATION THERAPY WHO REPORT HAVING PAIN

DENOMINATOR (SUBMISSION CRITERIA 2):

All visits for patients, regardless of age, with a diagnosis of cancer currently receiving radiation therapy who report having pain

DENOMINATOR NOTE: For the reporting purposes of this measure, in instances where CPT code 77427 is reported, the billing date, which may or may not be the same date as the face-to-face encounter with the physician, should be used to pull the appropriate patient population into the denominator. It is expected, though, that the numerator criteria would be performed at the time of the actual face-to-face encounter during the series of treatments.

Denominator Criteria (Eligible Cases) 2:

All eligible instances when pain severity quantified; pain present **(1125F)** is submitted in the numerator for Measure #143

AND

Diagnosis for cancer (ICD-10-CM): C00.0, C00.1, C00.2, C00.3, C00.4, C00.5, C00.6, C00.8, C00.9, C01, C02.0, C02.1, C02.2, C02.3, C02.4, C02.8, C02.9, C03.0, C03.1, C03.9, C04.0, C04.1, C04.8, C04.9, C05.0, C05.1, C05.2, C05.8, C05.9, C06.0, C06.1, C06.2, C06.80, C06.89, C06.9, C07, C08.0, C08.1, C08.9, C09.0, C09.1, C09.8, C09.9, C10.0, C10.1, C10.2, C10.3, C10.4, C10.8, C10.9, C11.0, C11.1, C11.2, C11.3, C11.8, C11.9, C12, C13.0, C13.1, C13.2, C13.8, C13.9, C14.0, C14.2, C14.8, C15.3, C15.4, C15.5, C15.8, C15.9, C16.0, C16.1, C16.2, C16.3, C16.4, C16.5, C16.6, C16.8, C16.9, C17.0, C17.1, C17.2, C17.3, C17.8, C17.9, C18.0, C18.1, C18.2, C18.3, C18.4, C18.5, C18.6, C18.7, C18.8, C18.9, C19, C20, C21.0, C21.1, C21.2, C21.8, C22.0, C22.1, C22.2, C22.3, C22.4, C22.7, C22.8, C22.9, C23, C24.0, C24.1, C24.8, C24.9, C25.0, C25.1, C25.2, C25.3, C25.4, C25.7, C25.8, C25.9, C26.0, C26.1, C26.9, C30.0, C30.1, C31.0, C31.1, C31.2, C31.3, C31.8, C31.9, C32.0, C32.1, C32.2, C32.3, C32.8, C32.9, C33, C34.00, C34.01, C34.02, C34.10, C34.11, C34.12, C34.2, C34.30, C34.31, C34.32, C34.80, C34.81, C34.82, C34.90, C34.91, C34.92, C37, C38.0, C38.1, C38.2, C38.3, C38.4, C38.8, C39.0, C39.9, C40.00, C40.01, C40.02, C40.10, C40.11, C40.12, C40.20, C40.21, C40.22, C40.30, C40.31, C40.32, C40.80, C40.81, C40.82, C40.90, C40.91, C40.92, C41.0, C41.1, C41.2, C41.3, C41.4, C41.9, C43.0, C43.10, C43.11, C43.12, C43.121, C43.122, C43.20, C43.21, C43.22, C43.30, C43.31, C43.39, C43.4, C43.51, C43.52, C43.59, C43.60, C43.61, C43.62, C43.70, C43.71, C43.72, C43.8, C43.9, C44.00, C44.01, C44.02, C44.09, C44.101, C44.1021, C44.1022, C44.1091, C44.1092, C44.111, C44.1121, C44.1122, C44.1191, C44.1192, C44.121, C44.1221, C44.1222, C44.1291, C44.1292, C44.131, C44.1321, C44.1322, C44.1391, C44.1392, C44.191, C44.1921, C44.1922, C44.1991, C44.1992, C44.201, C44.202, C44.209, C44.211, C44.212, C44.219, C44.221, C44.222, C44.229, C44.291, C44.292, C44.299, C44.300, C44.301, C44.309, C44.310, C44.311, C44.319, C44.320, C44.321, C44.329, C44.390, C44.391, C44.399, C44.40, C44.41, C44.42, C44.49, C44.500, C44.501, C44.509, C44.510, C44.511, C44.519, C44.520, C44.521, C44.529, C44.590, C44.591, C44.599, C44.601, C44.602, C44.609, C44.611, C44.612, C44.619, C44.621, C44.622, C44.629, C44.691, C44.692, C44.699, C44.701, C44.702, C44.709, C44.711, C44.712, C44.719, C44.721, C44.722, C44.729, C44.791, C44.792, C44.799, C44.80, C44.81, C44.82, C44.89, C44.90, C44.91, C44.92, C44.99, C45.0, C45.1, C45.2, C45.7, C45.9, C46.0, C46.1, C46.2, C46.3, C46.4, C46.50, C46.51, C46.52, C46.7, C46.9, C47.0, C47.10, C47.11, C47.12, C47.20, C47.21, C47.22, C47.3, C47.4,

C47.5, C47.6, C47.8, C47.9, C48.0, C48.1, C48.2, C48.8, C49.0, C49.A0, C49.A1, C49.A2, C49.A3, C49.A4, C49.A5, C49.A9, C49.10, C49.11, C49.12, C49.20, C49.21, C49.22, C49.3, C49.4, C49.5, C49.6, C49.8, C49.9, C4A.0, C4A.10, C4A.111, C4A.112, C4A.121, C4A.122, C4A.20, C4A.21, C4A.22, C4A.30, C4A.31, C4A.39, C4A.4, C4A.51, C4A.52, C4A.59, C4A.60, C4A.61, C4A.62, C4A.70, C4A.71, C4A.72, C4A.8, C4A.9, C50.011, C50.012, C50.019, C50.021, C50.022, C50.029, C50.111, C50.112, C50.119, C50.121, C50.122, C50.129, C50.211, C50.212, C50.219, C50.221, C50.222, C50.229, C50.311, C50.312, C50.319, C50.321, C50.322, C50.329, C50.411, C50.412, C50.419, C50.421, C50.422, C50.429, C50.511, C50.512, C50.519, C50.521, C50.522, C50.529, C50.611, C50.612, C50.619, C50.621, C50.622, C50.629, C50.811, C50.812, C50.819, C50.821, C50.822, C50.829, C50.911, C50.912, C50.919, C50.921, C50.922, C50.929, C51.0, C51.1, C51.2, C51.8, C51.9, C52, C53.0, C53.1, C53.8, C53.9, C54.0, C54.1, C54.2, C54.3, C54.8, C54.9, C55, C56.1, C56.2, C56.3, C56.9, C57.00, C57.01, C57.02, C57.10, C57.11, C57.12, C57.20, C57.21, C57.22, C57.3, C57.4, C57.7, C57.8, C57.9, C58, C60.0, C60.1, C60.2, C60.8, C60.9, C61, C62.00, C62.01, C62.02, C62.10, C62.11, C62.12, C62.90, C62.91, C62.92, C63.00, C63.01, C63.02, C63.10, C63.11, C63.12, C63.2, C63.7, C63.8, C63.9, C64.1, C64.2, C64.9, C65.1, C65.2, C65.9, C66.1, C66.2, C66.9, C67.0, C67.1, C67.2, C67.3, C67.4, C67.5, C67.6, C67.7, C67.8, C67.9, C68.0, C68.1, C68.8, C68.9, C69.00, C69.01, C69.02, C69.10, C69.11, C69.12, C69.20, C69.21, C69.22, C69.30, C69.31, C69.32, C69.40, C69.41, C69.42, C69.50, C69.51, C69.52, C69.60, C69.61, C69.62, C69.80, C69.81, C69.82, C69.90, C69.91, C69.92, C70.0, C70.1, C70.9, C71.0, C71.1, C71.2, C71.3, C71.4, C71.5, C71.6, C71.7, C71.8, C71.9, C72.0, C72.1, C72.20, C72.21, C72.22, C72.30, C72.31, C72.32, C72.40, C72.41, C72.42, C72.50, C72.59, C72.9, C73, C74.00, C74.01, C74.02, C74.10, C74.11, C74.12, C74.90, C74.91, C74.92, C75.0, C75.1, C75.2, C75.3, C75.4, C75.5, C75.8, C75.9, C76.0, C76.1, C76.2, C76.3, C76.40, C76.41, C76.42, C76.50, C76.51, C76.52, C76.8, C77.0, C77.1, C77.2, C77.3, C77.4, C77.5, C77.8, C77.9, C78.00, C78.01, C78.02, C78.1, C78.2, C78.30, C78.39, C78.4, C78.5, C78.6, C78.7, C78.80, C78.89, C79.00, C79.01, C79.02, C79.10, C79.11, C79.19, C79.2, C79.31, C79.32, C79.40, C79.49, C79.51, C79.52, C79.60, C79.61, C79.62, C79.63, C79.70, C79.71, C79.72, C79.81, C79.82, C79.89, C79.9, C7A.00, C7A.010, C7A.011, C7A.012, C7A.019, C7A.020, C7A.021, C7A.022, C7A.023, C7A.024, C7A.025, C7A.026, C7A.029, C7A.090, C7A.091, C7A.092, C7A.093, C7A.094, C7A.095, C7A.096, C7A.098, C7A.1, C7A.8, C7B.00, C7B.01, C7B.02, C7B.03, C7B.04, C7B.09, C7B.1, C7B.8, C80.0, C80.1, C80.2, C81.00, C81.01, C81.02, C81.03, C81.04, C81.05, C81.06, C81.07, C81.08, C81.09, C81.10, C81.11, C81.12, C81.13, C81.14, C81.15, C81.16, C81.17, C81.18, C81.19, C81.20, C81.21, C81.22, C81.23, C81.24, C81.25, C81.26, C81.27, C81.28, C81.29, C81.30, C81.31, C81.32, C81.33, C81.34, C81.35, C81.36, C81.37, C81.38, C81.39, C81.40, C81.41, C81.42, C81.43, C81.44, C81.45, C81.46, C81.47, C81.48, C81.49, C81.70, C81.71, C81.72, C81.73, C81.74, C81.75, C81.76, C81.77, C81.78, C81.79, C81.90, C81.91, C81.92, C81.93, C81.94, C81.95, C81.96, C81.97, C81.98, C81.99, C82.00, C82.01, C82.02, C82.03, C82.04, C82.05, C82.06, C82.07, C82.08, C82.09, C82.10, C82.11, C82.12, C82.13, C82.14, C82.15, C82.16, C82.17, C82.18, C82.19, C82.20, C82.21, C82.22, C82.23, C82.24, C82.25, C82.26, C82.27, C82.28, C82.29, C82.30, C82.31, C82.32, C82.33, C82.34, C82.35, C82.36, C82.37, C82.38, C82.39, C82.40, C82.41, C82.42, C82.43, C82.44, C82.45, C82.46, C82.47, C82.48, C82.49, C82.50, C82.51, C82.52, C82.53, C82.54, C82.55, C82.56, C82.57, C82.58, C82.59, C82.60, C82.61, C82.62, C82.63, C82.64, C82.65, C82.66, C82.67, C82.68, C82.69, C82.80, C82.81, C82.82, C82.83, C82.84, C82.85, C82.86, C82.87, C82.88, C82.89, C82.90, C82.91, C82.92, C82.93, C82.94, C82.95, C82.96, C82.97, C82.98, C82.99, C83.00, C83.01, C83.02, C83.03, C83.04, C83.05, C83.06, C83.07, C83.08, C83.09, C83.10, C83.11, C83.12, C83.13, C83.14, C83.15, C83.16, C83.17, C83.18, C83.19, C83.30, C83.31, C83.32, C83.33, C83.34, C83.35, C83.36, C83.37, C83.38, C83.390, C83.398, C83.50, C83.51, C83.52, C83.53, C83.54, C83.55, C83.56, C83.57, C83.58, C83.59, C83.70, C83.71, C83.72, C83.73, C83.74, C83.75, C83.76, C83.77, C83.78, C83.79, C83.80, C83.81, C83.82, C83.83, C83.84, C83.85, C83.86, C83.87, C83.88, C83.89, C83.90, C83.91, C83.92, C83.93, C83.94, C83.95, C83.96, C83.97, C83.98, C83.99, C84.00, C84.01, C84.02, C84.03, C84.04, C84.05, C84.06, C84.07, C84.08, C84.09, C84.10, C84.11, C84.12, C84.13, C84.14, C84.15, C84.16, C84.17, C84.18, C84.19, C84.40, C84.41, C84.42, C84.43, C84.44, C84.45, C84.46, C84.47, C84.48, C84.49, C84.60, C84.61, C84.62, C84.63, C84.64, C84.65, C84.66, C84.67, C84.68, C84.69, C84.7A, C84.70, C84.71, C84.72, C84.73, C84.74, C84.75, C84.76, C84.77, C84.78, C84.79, C84.90, C84.91, C84.92, C84.93, C84.94, C84.95, C84.96, C84.97, C84.98, C84.99, C84.A0, C84.A1, C84.A2, C84.A3, C84.A4, C84.A5, C84.A6, C84.A7, C84.A8, C84.A9, C84.Z0, C84.Z1, C84.Z2, C84.Z3, C84.Z4, C84.Z5, C84.Z6, C84.Z7, C84.Z8, C84.Z9, C85.10, C85.11, C85.12, C85.13, C85.14, C85.15, C85.16, C85.17, C85.18, C85.19, C85.20, C85.21, C85.22, C85.23, C85.24, C85.25, C85.26, C85.27, C85.28, C85.29, C85.80, C85.81, C85.82, C85.83, C85.84, C85.85, C85.86, C85.87, C85.88, C85.89, C85.90, C85.91, C85.92, C85.93, C85.94, C85.95, C85.96,

C85.97, C85.98, C85.99, C86.00, C86.10, C86.20, C86.30, C86.40, C86.50, C86.60, C88.00, C88.20, C88.30, C88.40, C88.80, C88.90, C90.00, C90.01, C90.02, C90.10, C90.11, C90.12, C90.20, C90.21, C90.22, C90.30, C90.31, C90.32, C91.00, C91.01, C91.02, C91.10, C91.11, C91.12, C91.30, C91.31, C91.32, C91.40, C91.41, C91.42, C91.50, C91.51, C91.52, C91.60, C91.61, C91.62, C91.90, C91.91, C91.92, C91.A0, C91.A1, C91.A2, C91.Z0, C91.Z1, C91.Z2, C92.00, C92.01, C92.02, C92.10, C92.11, C92.12, C92.20, C92.21, C92.22, C92.30, C92.31, C92.32, C92.40, C92.41, C92.42, C92.50, C92.51, C92.52, C92.60, C92.61, C92.62, C92.90, C92.91, C92.92, C92.A0, C92.A1, C92.A2, C92.Z0, C92.Z1, C92.Z2, C93.00, C93.01, C93.02, C93.10, C93.11, C93.12, C93.30, C93.31, C93.32, C93.90, C93.91, C93.92, C93.Z0, C93.Z1, C93.Z2, C94.00, C94.01, C94.02, C94.20, C94.21, C94.22, C94.30, C94.31, C94.32, C94.40, C94.41, C94.42, C94.6, C94.80, C94.81, C94.82, C95.00, C95.01, C95.02, C95.10, C95.11, C95.12, C95.90, C95.91, C95.92, C96.0, C96.20, C96.21, C96.22, C96.29, C96.4, C96.5, C96.6, C96.9, C96.A, C96.Z, D37.01, D37.02, D37.030, D37.031, D37.032, D37.039, D37.04, D37.05, D37.09, D37.1, D37.2, D37.3, D37.4, D37.5, D37.6, D37.8, D37.9, D38.0, D38.1, D38.2, D38.3, D38.4, D38.5, D38.6, D39.0, D39.10, D39.11, D39.12, D39.2, D39.8, D39.9, D40.0, D40.10, D40.11, D40.12, D40.8, D40.9, D41.00, D41.01, D41.02, D41.10, D41.11, D41.12, D41.20, D41.21, D41.22, D41.3, D41.4, D41.8, D41.9, D42.0, D42.1, D42.9, D43.0, D43.1, D43.2, D43.3, D43.4, D43.8, D43.9, D44.0, D44.10, D44.11, D44.12, D44.2, D44.3, D44.4, D44.5, D44.6, D44.7, D44.9, D45, D46.0, D46.1, D46.20, D46.21, D46.22, D46.4, D46.9, D46.A, D46.B, D46.C, D46.Z, D47.1, D47.2, D47.3, D47.4, D47.9, D47.01, D47.02, D47.09, D47.Z1, D47.Z2, D47.Z9, D48.0, D48.19, D48.2, D48.3, D48.4, D48.5, D48.60, D48.61, D48.62, D48.7, D48.9, D49.0, D49.1, D49.2, D49.3, D49.4, D49.511, D49.512, D49.519, D49.59, D49.6, D49.7, D49.81, D49.89, D49.9

AND

Patient procedure during the performance period (CPT) – Procedure codes: 77427, 77431, 77432, 77435
WITHOUT

Telehealth Modifier (including but not limited to): GQ, GT, POS 02, POS 10

NUMERATOR (SUBMISSION CRITERIA 2):

Patient visits that included a documented plan of care to address pain

Numerator Instructions: A documented plan of care may include: use of opioids, nonopioid analgesics, psychological support, patient and/or family education, referral to a pain clinic, or reassessment of pain at an appropriate time interval.

Numerator Options:

Performance Met:

Plan of care to address pain documented (**0521F**)

OR

Performance Not Met:

Plan of care for pain not documented, reason not otherwise specified (**0521F with 8P**)

RATIONALE:

Pain is one of the most common and debilitating symptoms reported amongst cancer patients and in fact ICD-11 contains a new classification for chronic cancer-related pain, defining it as chronic pain caused by the primary cancer itself, or metastases, or its treatment. A systematic review found that 55 percent of patients undergoing anticancer treatment reported pain (1) and chemotherapy and radiation specifically are associated with several distinct pain syndromes. (2) Each year, over a million cancer patients in the US receive chemotherapy or radiation. (3) Severe pain increases the risk of anxiety and depression (2) and a recent study showed that cancer patients who reported pain had worse employment and financial outcomes; the greater the pain, the worse the outcomes. (4) Cancer patients have also reported that pain interferes with their mood, work, relationships with other people, sleep, and overall enjoyment of life. (5)

Assessing pain and developing a plan of care (i.e., pain management) are critical for symptom control, pain management, and the cancer patient's overall quality of life; it is an essential part of the oncologic management of a cancer patient. (6) However, many oncology patients report insufficient pain control. (7) A retrospective chart review analysis found an 84 percent

adherence to the documentation of pain intensity and 43 percent adherence to pain re-assessment within an hour of medication administration. (8) An observational study found that over half of its cancer patients had a negative pain management index score, indicating that the prescribed pain treatments were not commensurate with the pain intensity reported by the patient. (9) Disparities exist as well, for example, a recent study evaluated opioid prescription fills and potency among cancer patients near end of life between 2007-2019. The study found that while all patients had a steady decline in opioid access, Black and Hispanic patients were less likely to receive opioids than White patients (Black, -4.3 percentage points, 95% CI; Hispanic, -3.6 percentage points, 95% CI) and received lower daily doses (Black, -10.5 MMED, 95% CI; Hispanic, -9.1 MMED, 95% CI). (10)

The intent of the paired measures *Percentage of patient visits, regardless of patient age, with a diagnosis of cancer currently receiving chemotherapy or radiation therapy in which pain intensity is quantified* and *Percentage of visits for patients, regardless of age, with a diagnosis of cancer currently receiving chemotherapy or radiation therapy who report having pain with a documented plan of care to address pain* is to improve pain management, thereby improving the function and quality of life of the cancer patient.

References:

- (1) Van den Beuken-van Everdingen, M. H., Hochstenbach, L. M., Joosten, E. A., Tjan-Heijnen, V. C., & Janssen, D. J. (2016). Update on Prevalence of Pain in Patients With Cancer: Systematic Review and Meta-Analysis. *Journal of Pain and Symptom Management*, 51(6), 1070–1090.e9. <https://doi.org/10.1016/j.jpainsymman.2015.12.340>
- (2) National Cancer Institute. (2019, March 6). Cancer Pain (PDQ®)–Patient Version. <https://www.cancer.gov/about-cancer/treatment/side-effects/pain/pain-pdq>
- (3) Centers for Disease Control and Prevention. (2022, November 2). Information for Health Care Providers on Infections During Chemotherapy. <https://www.cdc.gov/cancer/preventinfections/index.htm>
- (4) Halpern, M. T., de Moor, J. S., & Yabroff, K. R. (2022). Impact of Pain on Employment and Financial Outcomes Among Cancer Survivors. *Journal of Clinical Oncology: Official Journal of the American Society of Clinical Oncology*, 40(1), 24–31. <https://doi.org/10.1200/JCO.20.03746>
- (5) Moryl, N., Dave, V., Glare, P., Bokhari, A., Malhotra, V. T., Gulati, A., Hung, J., Puttanniah, V., Griffo, Y., Tickoo, R., Wiesenthal, A., Horn, S. D., & Inturrisi, C. E. (2018). Patient-Reported Outcomes and Opioid Use by Outpatient Cancer Patients. *The Journal of Pain*, 19(3), 278–290. <https://doi.org/10.1016/j.jpain.2017.11.001>
- (6) National Comprehensive Cancer Network® (NCCN). (July 31, 2023). NCCN Clinical Practice Guidelines in Oncology. Adult Cancer Pain Version 2.2023. <http://www.nccn.org>
- (7) Jacqueline C. Dela Pena, Vincent D. Marshall & Michael A. Smith. (2022). Impact of NCCN Guideline Adherence in Adult Cancer Pain on Length of Stay. *Journal of Pain & Palliative Care Pharmacotherapy*, 36:2, 95-102, DOI: 10.1080/15360288.2022.2066746
- (8) El Rahi, C., Murillo, JR., & Zaghloul, H. (September 2017). Pain Assessment Practices in Patients with Cancer Admitted to the Oncology Floor. *J Hematol Oncol Pharm*, 7(3):109-113. <https://jhonline.com/issue-archive/2017-issues/jhop-september-2017-vol-7-no-3/17246-pain-assessment-practices-in-patients-with-cancer-admitted-to-the-oncology-floor>

(9) Thronæs, M., Balstad, T. R., Brunelli, C., Løhre, E. T., Klepstad, P., Vagnildhaug, O. M., Kaasa, S., Knudsen, A. K., & Solheim, T. S. (2020). Pain management index (PMI)-does it reflect cancer patients' wish for focus on pain? *Supportive Care in Cancer: Official Journal of the Multinational Association of Supportive Care in Cancer*, 28(4), 1675–1684. <https://doi.org/10.1007/s00520-019-04981-0>

(10) Enzinger, A. C., Ghosh, K., Keating, N. L., Cutler, D. M., Clark, C. R., Florez, N., Landrum, M. B., & Wright, A. A. (2023). Racial and Ethnic Disparities in Opioid Access and Urine Drug Screening Among Older Patients With Poor-Prognosis Cancer Near the End of Life. *Journal of clinical oncology : official journal of the American Society of Clinical Oncology*, 41(14), 2511–2522. <https://doi.org/10.1200/JCO.22.01413>

CLINICAL RECOMMENDATION STATEMENTS:

Specific clinical practice guideline recommendations that support this measure are: (6)

1. Perform pain reassessment at specified intervals to ensure that analgesic therapy is providing maximum benefit with minimal adverse effects, and that the treatment plan is followed.
2. General principles of cancer pain management
 - a. Optimize pain management therapies to improve function and meet patient's goals of care.
 - b. Select the most appropriate analgesic regimen based on the pain diagnosis, comorbid conditions, safety, potential drug interactions, estimated trajectory of pain, medication availability, and expense/financial toxicity
 - c. Analgesic regimen may include an opioid, acetaminophen, nonsteroidal anti-inflammatory drugs, and/or adjuvant analgesics.
 - d. Provide psychosocial support
 - e. Provide patient and family/caregiver education
 - f. Optimize integrative interventions and multidisciplinary care
3. Ongoing care & goals of treatment
 - a. Have regular follow-up schedule to monitor pain therapy outcomes
 - b. Monitor for the use of analgesics as prescribed, especially in patients with risk factors for or history of substance misuse/diversion or cognitive dysfunction
 - c. Provide written follow-up pain plan, including prescribed medications
 - d. Routinely reevaluate pain at each contact and as needed to meet patient-specific goals for comfort, function, and safety
 - e. Instruct the patient on the importance of
 - i. Following documented pain plan
 - ii. Scheduling and keeping outpatient appointments
 - iii. Contacting clinician if pain worsens or adverse effects are inadequately controlled, including availability of after-hours assistance to facilitate titration of analgesic
4. Pain intensity rating
 - a. Pain intensity rating scales can be used as part of universal screening and comprehensive pain assessment. At minimum, patients should be asked about "current" pain, as well as "worst" pain, "average" pain, and "least" pain in the past 24 hours.
 - b. For comprehensive assessment, also include "worst pain in past week," "pain at rest," and "pain with movement."
5. Comprehensive Pain Assessment

- a. The goal of comprehensive pain assessment is to find the cause of the pain and identify optimal therapies. Individualized pain treatment is based on the etiology and characteristics of pain, pain trajectory, the patient's clinical condition, and patient-centered goals of care.
- 6. Psychosocial Support
 - a. Describe the mutually agreed upon plan of care to be taken and when results can be expected.

COPYRIGHT:

The Measure is not a clinical guideline, does not establish a standard of medical care, and has not been tested for all potential applications.

The Measure, while copyrighted, can be reproduced and distributed, without modification, for noncommercial purposes, e.g., use by health care providers in connection with their practices. Commercial use is defined as the sale, license, or distribution of the Measure for commercial gain, or incorporation of the Measure into a product or service that is sold, licensed or distributed for commercial gain.

Commercial uses of the Measure require a license agreement between the user and American Society of Clinical Oncology (ASCO) and prior written approval of ASCO. Contact measurement@asco.org for licensing this measure. Neither ASCO nor its members shall be responsible for any use of the Measure.

The PCPI's and AMA's significant past efforts and contributions to the development and updating of the Measures are acknowledged.

ASCO is solely responsible for the review and enhancement ("Maintenance") of the Measure as of January 2015.

ASCO encourages use of the Measure by other health care professionals, where appropriate.

THE MEASURE AND SPECIFICATIONS ARE PROVIDED "AS IS" WITHOUT WARRANTY OF ANY KIND.

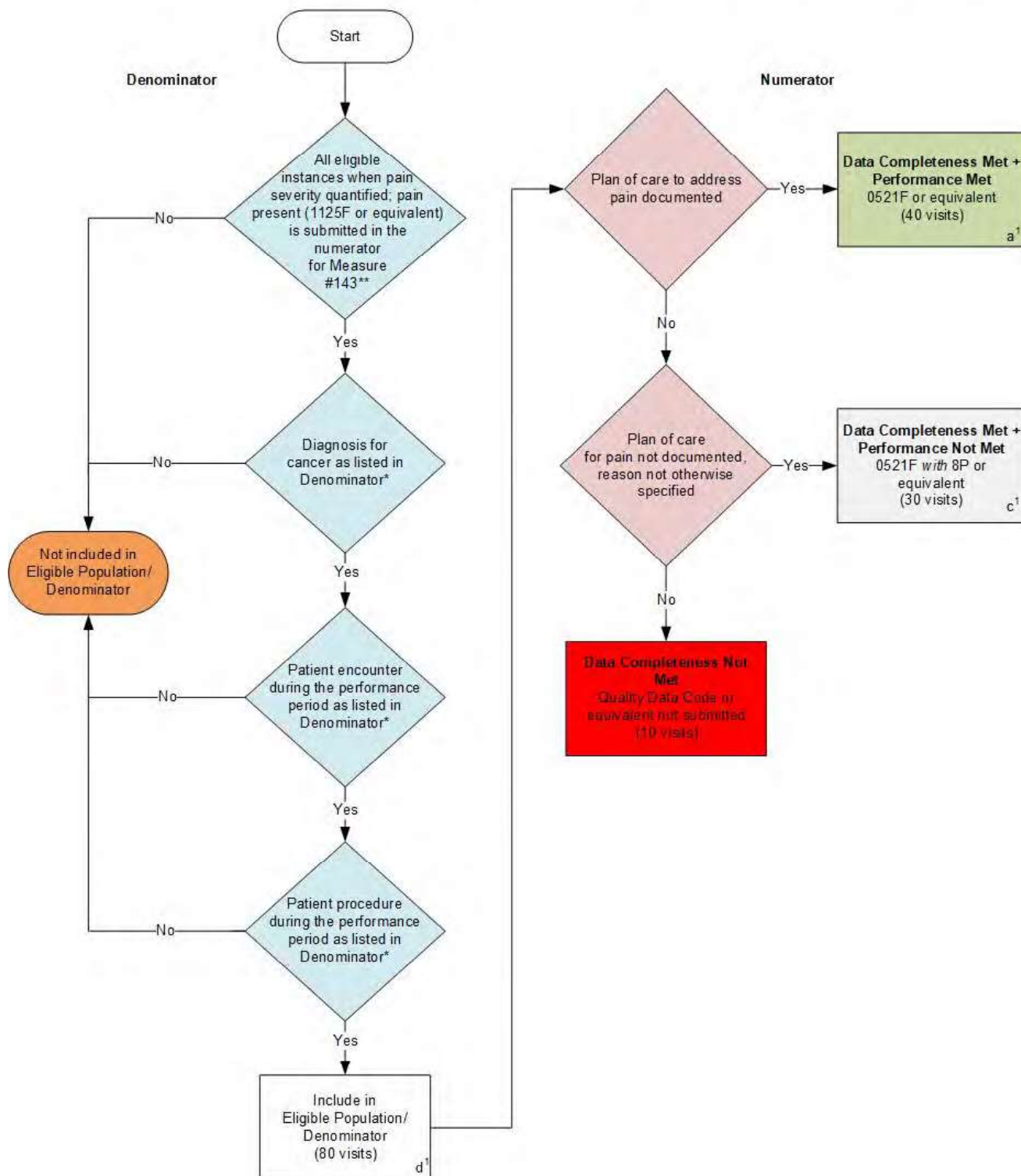
© 2024 American Society of Clinical Oncology. All Rights Reserved.

Limited proprietary coding may be contained in the Measure specifications for convenience. A license agreement must be entered prior to a third party's use of Current Procedural Terminology (CPT®) or other proprietary code set contained in the Measures. Any other use of CPT or other coding by the third party is strictly prohibited. ASCO and its members disclaim all liability for use or accuracy of any CPT or other coding contained in the specifications.

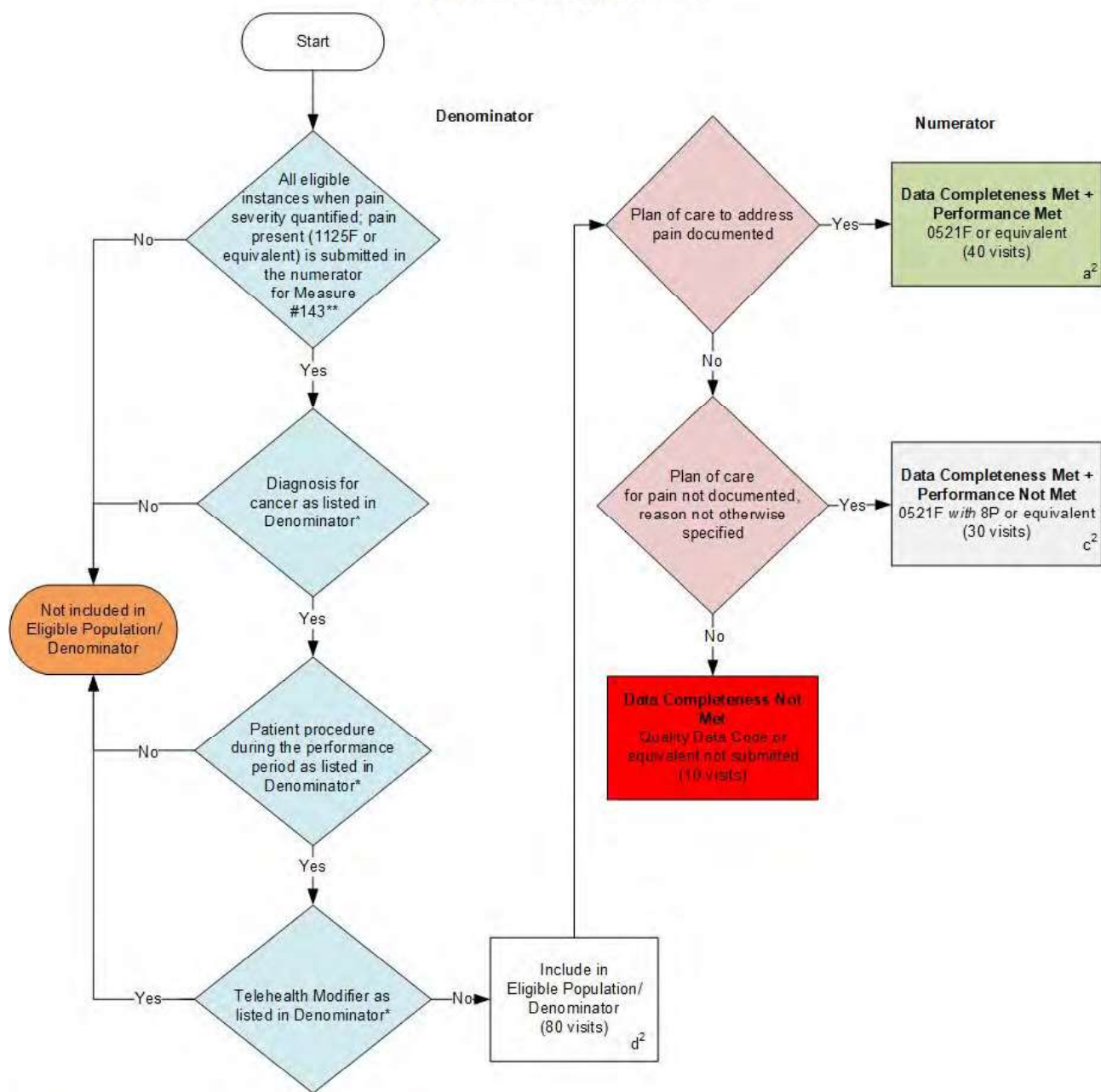
CPT® contained in the Measures specifications is copyright 2004-2024 American Medical Association. LOINC® copyright 2004-2024 Regenstrief Institute, Inc. SNOMED CLINICAL TERMS (SNOMED CT®) copyright 2004-2024 The International Health Terminology Standards Development Organisation (IHTSDO). ICD-10 is copyright 2024 World Health Organization. All Rights Reserved.

**2025 Clinical Quality Measure Flow for Quality ID #144 (CBE 0383):
Oncology: Medical and Radiation – Plan of Care for Pain
Submission Criteria One**

Disclaimer: Refer to the measure specification for specific coding and instructions to submit this measure.



Submission Criteria Two



SAMPLE CALCULATIONS

Data Completeness=

$$\frac{\text{Performance Met (a}^1 + a^2 = 80 \text{ visits)} + \text{Performance Not Met (c}^1 + c^2 = 60 \text{ visits)}}{\text{Eligible Population / Denominator (d}^1 + d^2 = 160 \text{ visits)}} = \frac{140 \text{ visits}}{160 \text{ visits}} = 87.50\%$$

Performance Rate=

$$\frac{\text{Performance Met (a}^1 + a^2 = 80 \text{ visits)}}{\text{Data Completeness Numerator (140 visits)}} = \frac{80 \text{ visits}}{140 \text{ visits}} = 57.14\%$$

*See the posted measure specification for specific coding and instructions to submit this measure.

**Submitting Measure #143 is a precursor for submitting this measure. Patients where 1125F without modifier or equivalent (pain is present) is submitted in Measure #143 are pulled into the denominator for Measure #144.

NOTE: Submission Frequency: Visit

CPT only copyright 2024 American Medical Association. All rights reserved.
The measure diagrams were developed by CMS as a supplemental resource to be used in conjunction with the measure specifications. They should not be used alone or as a substitution for the measure specification.

v9

**2025 Clinical Quality Measure Flow Narrative for Quality ID #144 (CBE 0383): Oncology:
Medical and Radiation – Plan of Care for Pain**

***Disclaimer:** Refer to the measure specification for specific coding and instructions to submit this measure.*

Submission Criteria One:

1. Start with Denominator
2. Check *All eligible instances when pain severity quantified; pain present is submitted in the numerator for Measure #143***:
 - a. If *All eligible instances when pain severity quantified; pain present is submitted in the numerator for Measure #143*** equals No, do not include in *Eligible Population/Denominator*. Stop processing.
 - b. If *All eligible instances when pain severity quantified; pain present is submitted in the numerator for Measure #143*** equals Yes, proceed to check *Diagnosis for cancer as listed in Denominator**.
3. Check *Diagnosis for cancer as listed in Denominator**:
 - a. If *Diagnosis for cancer as listed in Denominator** equals No, do not include in *Eligible Population/Denominator*. Stop processing.
 - b. If *Diagnosis for cancer as listed in Denominator** equals Yes, proceed to check *Patient encounter during the performance period as listed in Denominator**.
4. Check *Patient encounter during the performance period as listed in Denominator**:
 - a. If *Patient encounter during the performance period as listed in Denominator** equals No, do not include in *Eligible Population/Denominator*. Stop processing.
 - b. If *Patient encounter during the performance period as listed in Denominator** equals Yes, proceed to check *Patient procedure during the performance period as listed in Denominator**.
5. Check *Patient procedure during the performance period as listed in Denominator**:
 - a. If *Patient procedure during the performance period as listed in Denominator** equals No, do not include in *Eligible Population/Denominator*. Stop processing.
 - b. If *Patient procedure during the performance period as listed in Denominator** equals Yes, include in *Eligible Population/Denominator*.
6. Denominator Population:
 - Denominator Population is all Eligible Visits in the denominator. Denominator is represented as Denominator in the Sample Calculation listed at the end of this document. Letter d¹ equals 80 visits in the Sample Calculation.
7. Start Numerator
8. Check *Plan of care to address pain documented*:
 - a. If *Plan of care to address pain documented* equals Yes, include in *Data Completeness Met and Performance Met*.

- *Data Completeness Met and Performance Met* letter is represented in the Data Completeness and Performance Rate in the Sample Calculation listed at the end of this document. Letter a¹ equals 40 visits in the Sample Calculation.
 - b. If *Plan of care to address pain documented* equals No, proceed to check *Plan of care for pain not documented, reason not otherwise specified*.
9. Check *Plan of care for pain not documented, reason not otherwise specified*:
- a. If *Plan of care for pain not documented, reason not otherwise specified* equals Yes, include in *Data Completeness Met and Performance Not Met*.
 - *Data Completeness Met and Performance Not Met* letter is represented in the Data Completeness and Performance Rate in the Sample Calculation listed at the end of this document. Letter c¹ equals 30 visits in the Sample Calculation.
 - b. If *Plan of care for pain not documented, reason not otherwise specified* equals No, proceed to check *Data Completeness Not Met*.
10. Check *Data Completeness Not Met*:
- If *Data Completeness Not Met*, the Quality Data Code or equivalent was not submitted. 10 visits have been subtracted from the Data Completeness Numerator in the Sample Calculation.

*See the posted measure specification for specific coding and instructions to submit this measure.

**Submitting Measure #143 is a precursor for submitting this measure. Patients where 1125 F without modifier or equivalent (pain is present) is submitted in Measure #143 are pulled into the denominator for Measure #144.

NOTE: Submission Frequency: Visit

The measure diagrams were developed by CMS as a supplemental resource to be used in conjunction with the measure specifications. They should not be used alone or as a substitution for the measure specification.

Submission Criteria Two:

1. Start with Denominator
2. Check *All eligible instances when pain severity quantified; pain present is submitted in the numerator for Measure #143***:
 - a. If *All eligible instances when pain severity quantified; pain present is submitted in the numerator for Measure #143*** equals No, do not include in *Eligible Population/Denominator*. Stop processing.
 - b. If *All eligible instances when pain severity quantified; pain present is submitted in the numerator for Measure #143*** equals Yes, proceed to check *Diagnosis for cancer as listed in Denominator**.
3. Check *Diagnosis for cancer as listed in Denominator**:
 - a. If *Diagnosis for cancer as listed in Denominator** equals No, do not include in *Eligible Population/Denominator*. Stop processing.

- b. If *Diagnosis for cancer as listed in Denominator** equals Yes, proceed to check *Patient procedure during the performance period*.
 4. Check *Patient procedure during the performance period*:
 - a. If *Patient procedure during the performance period* equals No, do not include in *Eligible Population/Denominator*. Stop processing.
 - b. If *Patient procedure during the performance period* equals Yes, proceed to check *Telehealth Modifier* as listed in *Denominator**.
 5. Check *Telehealth Modifier as listed in Denominator**:
 - a. If *Telehealth Modifier* equals Yes, do not include in *Eligible Population/Denominator*. Stop processing.
 - b. If *Telehealth Modifier* equals No, include in *Eligible Population/Denominator*.
 6. Denominator Population:
 - Denominator Population is all Eligible Visits in the denominator. Denominator is represented as Denominator in the Sample Calculation listed at the end of this document. Letter d² equals 80 visits in the Sample Calculation.
 7. Start Numerator
 8. Check *Plan of care to address pain documented*:
 - a. If *Plan of care to address pain documented* equals Yes, include in *Data Completeness Met and Performance Met*.
 - *Data Completeness Met and Performance Met* letter is represented in the Data Completeness and Performance Rate in the Sample Calculation listed at the end of this document. Letter a² equals 40 visits in the Sample Calculation.
 - b. If *Plan of care to address pain documented* equals No, proceed to *Plan of care for pain not documented, reason not otherwise specified*.
 9. Check *Plan of care for pain not documented, reason not otherwise specified*:
 - a. If *Plan of care for pain not documented, reason not otherwise specified* equals Yes, include in *Data Completeness Met and Performance Not Met*.
 - *Data Completeness Met and Performance Not Met* letter is represented in the Data Completeness and Performance Rate in the Sample Calculation listed at the end of this document. Letter c² equals 30 visits in the Sample Calculation.
 - b. If *Plan of care for pain not documented, reason not otherwise specified* equals No, proceed to *Data Completeness Not Met*.
 10. Check *Data Completeness Not Met*:
 - If *Data Completeness Not Met*, the Quality Data Code or equivalent was not submitted. 10 visits have been subtracted from the Data Completeness Numerator in the Sample Calculation.

Sample Calculations

Data Completeness equals Performance Met (a^1 plus a^2 equals 80 visits) plus Performance Not Met (c^1 plus c^2 equals 60 visits) divided by Eligible Population/Denominator (d^1 plus d^2 equals 160 visits). All equals 140 visits divided by 160 visits. All equals 87.50 percent.

Performance Rate equals Performance Met (a^1 plus a^2 equals 80 visits) divided by Data Completeness Numerator (140 visits). All equals 80 visits divided by 140 visits. All equals 57.14 percent.

*See the posted measure specification for specific coding and instructions to submit this measure.

**Submitting Measure #143 is a precursor for submitting this measure. Patients where 1125 F without modifier or equivalent (pain is present) is submitted in Measure #143 are pulled into the denominator for Measure #144.

NOTE: Submission Frequency: Visit

The measure diagrams were developed by CMS as a supplemental resource to be used in conjunction with the measure specifications. They should not be used alone or as a substitution for the measure specification.