

Quality ID #047 (CBE 0326): Advance Care Plan

2025 COLLECTION TYPE:

MIPS CLINICAL QUALITY MEASURES (CQMS)

MEASURE TYPE:

Process – High Priority

DESCRIPTION:

Percentage of patients aged 65 years and older who have an advance care plan or surrogate decision maker documented in the medical record or documentation in the medical record that an advance care plan was discussed but the patient did not wish or was not able to name a surrogate decision maker or provide an advance care plan.

INSTRUCTIONS:

This measure is to be submitted a minimum of **once per performance period** for patients seen during the performance period. There is no diagnosis associated with this measure. This measure may be submitted by Merit-based Incentive Payment System (MIPS) eligible clinicians who perform the quality actions described in the measure based on the services provided and the measure-specific denominator coding.

NOTE: This measure is appropriate for use in all healthcare settings (e.g., inpatient, nursing home, ambulatory) except the emergency department. For each of these settings, there should be documentation in the medical record(s) that advance care planning was discussed or documented.

NOTE: Patient encounters for this measure conducted via telehealth (including but not limited to encounters coded with GQ, GT, POS 02, POS 10) are allowable. Please note that effective January 1, 2025, while a measure may be denoted as telehealth eligible, specific denominator codes within the encounter may no longer be eligible due to changes outlined in the CY 2024 PFS Final Rule List of Medicare Telehealth Services.

Measure Submission Type:

Measure data may be submitted by individual MIPS eligible clinicians, groups, or third-party intermediaries. The listed denominator criteria are used to identify the intended patient population. The numerator options included in this specification are used to submit the quality actions as allowed by the measure. The quality data codes listed do not need to be submitted by MIPS eligible clinicians, groups, or third-party intermediaries that utilize this modality for submissions; however, these codes may be submitted for those third-party intermediaries that utilize Medicare Part B claims data. For more information regarding Application Programming Interface (API), please refer to the Quality Payment Program (QPP) website.

DENOMINATOR:

All patients aged 65 years and older

DENOMINATOR NOTE: MIPS eligible clinicians indicating the Place of Service as the emergency department will not be included in this measure.

**Signifies that this CPT Category I code is a non-covered service under the Medicare Part B Physician Fee Schedule (PFS). These non-covered services should be counted in the denominator population for MIPS CQMs.*

Denominator Criteria (Eligible Cases):

Patients aged ≥ 65 years on date of encounter

AND

Patient encounter during the performance period (CPT or HCPCS): 90791, 90792, 90832, 90834, 90837, 90839, 90845, 90846, 90847, 96116, 96130, 96132, 96110*, 96112, 96156, 96105, 96125, 98000, 98001, 98002, 98003, 98004, 98005, 98006, 98007, 98008, 98009, 98010, 98011, 98012, 98013, 98014, 98015, 98016, 99202, 99203, 99204, 99205, 99212, 99213, 99214, 99215, 99221, 99222, 99223, 99231, 99232, 99233, 99234, 99235, 99236, 99291, 99304, 99305, 99306, 99307, 99308, 99309, 99310, 99341, 99342, 99344, 99345, 99347, 99348, 99349, 99350, G0402, G0438, G0439

WITHOUT

Place of Service (POS): 23

AND NOT

DENOMINATOR EXCLUSION:

Hospice services received by patient any time during the measurement period: G9692

NUMERATOR:

Patients who have an advance care plan or surrogate decision maker documented in the medical record or documentation in the medical record that an advance care plan was discussed but patient did not wish or was not able to name a surrogate decision maker or provide an advance care plan

Definition:

Documentation that Patient did not Wish or was not able to Name a Surrogate Decision Maker or Provide an Advance Care Plan – May also include, as appropriate, the following:

- That the patient's cultural and/or spiritual beliefs preclude a discussion of advance care planning, as it would be viewed as harmful to the patient's beliefs and thus harmful to the physician-patient relationship.

Numerator Instructions:

If patient's cultural and/or spiritual beliefs preclude a discussion of advance care planning, submit **1124F**.

NUMERATOR NOTE: *The CPT Category II codes used for this measure indicate: Advance Care Planning was discussed and documented. The act of using the Category II codes on a claim indicates the provider confirmed that the Advance Care Plan was in the medical record (that is, at the point in time the code was assigned, the Advance Care Plan in the medical record was valid) or that advance care planning was discussed. The codes are required annually to ensure that the provider either confirms annually that the plan in the medical record is still appropriate or starts a new discussion.*

The provider does not need to review the Advance Care Plan annually with the patient to meet the numerator criteria; documentation of a previously developed advanced care plan that is still valid in the medical record meets numerator criteria.

*Services typically provided under CPT codes 99497 and 99483 satisfy the requirement of Advance Care Planning discussed and documented, minutes. If a patient received these types of services, submit CPT II **1123F** or **1124F**.*

Numerator Options:

Performance Met:

Advance Care Planning discussed and documented; advance care plan or surrogate decision maker documented in the medical record (**1123F**)

OR

Performance Met:

Advance Care Planning discussed and documented in the medical record; patient did not wish or was not able to name a surrogate decision maker or provide an advance care plan (**1124F**)

OR

Performance Not Met:

Advance Care Planning not documented, reason not otherwise specified (**1123F with 8P**)

RATIONALE:

Advance care planning is a continuous process of conversation and documentation to align a patient's care and interventions with their beliefs, values and preferences, in the event they become unable to make those decisions. The Centers for Medicare & Medicaid Services (CMS) describe advance care planning as a face-to-face service to discuss a patient's health wishes that may or may not include completing relevant documentation (CMS, 2019).

A number of documents may be completed as a result of the advance care planning conversation in order to capture a patient's wishes and goals for care. These documents are generally referred to as "advance directives" and can include: Durable Power of Attorney for Health Care (DPAHC), living will, and combined directives. In addition to these documents, a patient may have a Physician Orders for Life-Sustaining Treatment (POLST), also referred to as Medical Orders for Scope of Treatment (MOLST). A patient may also identify a surrogate decision maker to serve as their representative and decision maker in the event they cannot make decisions for themselves (Silveira et al., 2020).

Although it is widely agreed that advance care planning is a critical part of patient care, only about 50% of older adults have engaged in advance care planning. Of those older adults, about one-third have documented their wishes and only 10%–20% discussed their wishes with clinicians (Yadav et al., 2017; McMahan et al., 2021). A 2017 study found that 70% of providers indicated they only have advance care planning conversations with their patients experiencing advanced illness (Nichols & Cagle, 2018). The benefits of advance care planning may only be realized if the care team has access to and follows the patient's advance care plan.

Advance care planning can lead to decreased psychological distress and hospitalizations as well as improved end-of-life care, increased trust in providers and improved quality of life, and can facilitate hope. It has also been associated with increased knowledge about treatment options, documentation of advance care planning, patient-surrogate congruence, goal concordant care and compliance with patient wishes, among others (McMahan et al., 2021; Rosenberg et al., 2020; Martin et al., 2016; Bischoff et al., 2013).

References:

Centers for Medicare & Medicaid Services (CMS). 2019. Advance Care Planning. <https://www.cms.gov/Outreach-and-Education/Medicare-Learning-Network-MLN/MLNProducts/Downloads/AdvanceCarePlanning.pdf> (July 22, 2020)

Silveira, M.J., R.M. Arnold, J. Givens. 2020. Advance Care Planning and Advance Directives. <https://www.uptodate.com/contents/advance-care-planning-and-advance-directives> (July 22, 2020)

Yadav, K.N., N.B. Gabler, E. Cooney, S. Kent, J. Kim, N. Herbst, A. Mante, S.D. Halpern, & K.R. Courtright. 2017. "Approximately One in Three US Adults Completes Any Type of Advance Directive for End-Of-Life Care." *Health Affairs* 36(7), 1244–51. <https://doi.org/10.1377/hlthaff.2017.0175>

McMahan, R. D., Tellez, I., & Sudore, R. L. 2021. "Deconstructing the Complexities of Advance Care Planning Outcomes: What Do We Know and Where Do We Go? A Scoping Review." *Journal of the American Geriatrics Society* 69(1), 234–244. <https://doi.org/10.1111/jgs.16801>

Bires, J.L., E.F. Franklin, H.M. Nichols, & J.G. Cagle. 2018. "Advance Care Planning Communication: Oncology Patients and Providers Voice their Perspectives." *Journal of Cancer Education* 33(5), 1140–7. <https://doi.org/10.1007/s13187-017-1225-4>

Rosenberg, A.R., B. Popp, D.S. Dizon, A. El-Jawahri, & R. Spence. 2020. "Now, More Than Ever, Is the Time for Early and Frequent Advance Care Planning." *Journal of Clinical Oncology*, JCO.20.01080. <https://doi.org/10.1200/JCO.20.01080>

Martin, R.S., B. Hayes, K. Gregorevic, & W.K. Lim. 2016. "The Effects of Advance Care Planning Interventions on Nursing Home Residents: A Systematic Review." *Journal of the American Medical Directors Association*, 17(4), 284–93. <https://doi.org/10.1016/j.jamda.2015.12.017>

Bischoff, K.E., R. Sudore, Y. Miao, W.J. Boscardin, & A.K. Smith. 2013. "Advance Care Planning and the Quality of End-of-Life Care in Older Adults." *Journal of the American Geriatrics Society* 61(2), 209–14. <https://doi.org/10.1111/jgs.12105>

CLINICAL RECOMMENDATION STATEMENTS:

Advance directives are designed to respect patient's autonomy and determine his/her wishes about future life-sustaining medical treatment if unable to indicate wishes. Key interventions and treatment decisions to include in advance directives are: resuscitation procedures, mechanical respiration, chemotherapy, radiation therapy, dialysis, simple diagnostic tests, pain control, blood products, transfusions, and intentional deep sedation.

Oral statements:

- Conversations with relatives, friends, and clinicians are most common form; should be thoroughly documented in medical record for later reference.
- Properly verified oral statements carry same ethical and legal weight as those recorded in writing.

Instructional advance directives (DNR orders, living wills):

- Written instructions regarding the initiation, continuation, withholding, or withdrawal of particular forms of life-sustaining medical treatment.
- May be revoked or altered at any time by the patient.
- Clinicians who comply with such directives are provided legal immunity for such actions.

Durable power of attorney for health care or health care proxy:

- A written document that enables a capable person to appoint someone else to make future medical treatment choices for him or her in the event of decisional incapacity. (AGS)

The National Hospice and Palliative Care Organization provides the Caring Connection web site, which provides resources and information on end-of-life care, including a national repository of state-by-state advance directives.

COPYRIGHT:

This Physician Performance Measure (Measure) and related data specifications were developed by the former PCPI® Foundation (PCPI®) and the National Committee for Quality Assurance (NCQA). Neither the American Medical Association (AMA) or NCQA shall be responsible for any use of the Measure. The Measure is not a clinical guideline and does not establish a standard of medical care and has not been tested for all potential applications.

THE MEASURE AND SPECIFICATIONS ARE PROVIDED "AS IS" WITHOUT WARRANTY OF ANY KIND.

The AMA and NCQA make no representations, warranties, or endorsement about the quality of any organization or physician that uses or reports performance measures and NCQA has no liability to anyone who relies on such measures or specifications.

The Measure can be reproduced and distributed, without modification, for noncommercial purposes (e.g., use by healthcare providers in connection with their practices) without obtaining approval from NCQA. Commercial use is defined as the sale, licensing, or distribution of the Measure for commercial gain, or incorporation of the Measure into a product or service that is sold, licensed or distributed for commercial gain. All commercial uses or requests for modification must be approved by NCQA and are subject to a license at the discretion of NCQA.

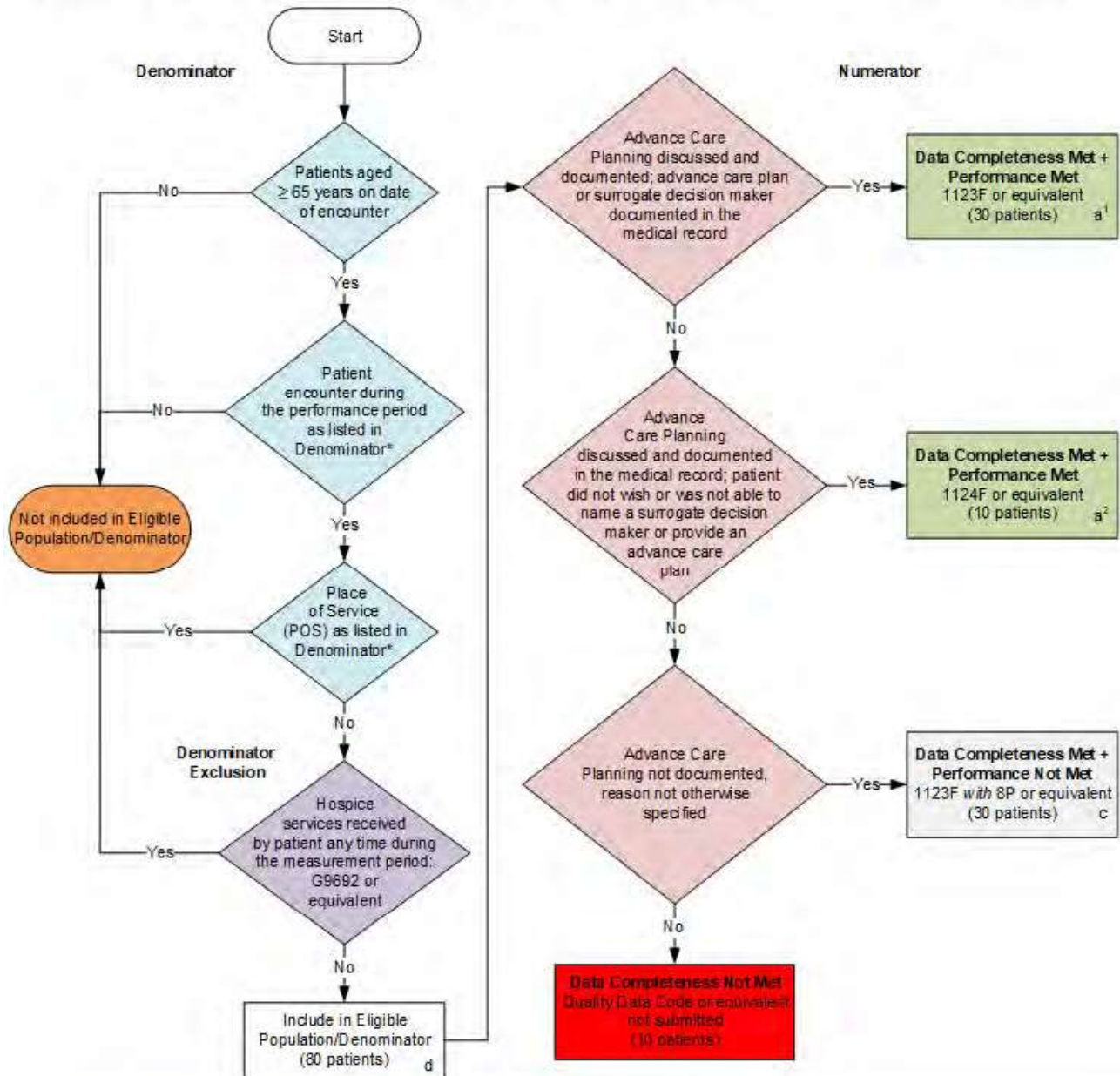
©2012-2024 National Committee for Quality Assurance. All Rights Reserved.

Limited proprietary coding is contained in the Measure specifications for user convenience. Users of proprietary code sets should obtain all necessary licenses from the owners of the code sets. The AMA and NCQA disclaim all liability for use or accuracy of any third party codes contained in the specifications.

CPT® contained in the Measure specifications is copyright 2004-2024 American Medical Association. LOINC® copyright 2004-2024 Regenstrief Institute, Inc. This material contains SNOMED Clinical Terms® (SNOMED CT®) copyright 2004-2024 International Health Terminology Standards Development Organisation. ICD-10 copyright 2024 World Health Organization. All Rights Reserved.

2025 Clinical Quality Measure Flow for Quality ID #47 (CBE 0326): Advance Care Plan

Disclaimer: Refer to the measure specification for specific coding and instructions to submit this measure.



SAMPLE CALCULATIONS

Data Completeness=

$$\frac{\text{Performance Met (a¹+a²=40 patients)} + \text{Performance Not Met (c=30 patients)}}{\text{Eligible Population / Denominator (d=80 patients)}} = \frac{70 \text{ patients}}{80 \text{ patients}} = 87.50\%$$

Performance Rate=

$$\frac{\text{Performance Met (a¹+a²=40 patients)}}{\text{Data Completeness Numerator (70 patients)}} = \frac{40 \text{ patients}}{70 \text{ patients}} = 57.14\%$$

* See the posted measure specification for specific coding and instructions to submit this measure.

NOTE: Submission Frequency: Patient-Process

CPT only copyright 2024 American Medical Association. All rights reserved.
 The measure diagrams were developed by CMS as a supplemental resource to be used in conjunction with the measure specifications. They should not be used alone or as a substitution for the measure specification.
 v9

**2025 Clinical Quality Measure Flow Narrative for Quality ID #047 (CBE 0326):
Advance Care Plan**

Disclaimer: Refer to the measure specification for specific coding and instructions to submit this measure.

1. Start with Denominator
2. Check *Patients aged greater than or equal to 65 years on date of encounter*:
 - a. If *Patients aged greater than or equal to 65 years on date of encounter* equals No, do not include in *Eligible Population/Denominator*. Stop processing.
 - b. If *Patients aged greater than or equal to 65 years on date of encounter* equals Yes, proceed to *Patient encounter during the performance period as listed in Denominator**.
3. Check *Patient encounter during the performance period as listed in Denominator**:
 - a. If *Patient encounter during the performance period as listed in Denominator** equals No, do not include in *Eligible Population/Denominator*. Stop processing.
 - b. If *Patient encounter during the performance period as listed in Denominator** equals Yes, proceed to *Place of service (POS) as listed in Denominator**.
4. Check *Place of service (POS) as listed in Denominator**:
 - a. If *Place of service (POS) as listed in Denominator** equals Yes, do not include in *Eligible Population/Denominator*. Stop processing.
 - b. If *Place of service (POS) as listed in Denominator** equals No, proceed to *Hospice services received by patient any time during the measurement period*.
5. *Hospice services received by patient any time during the measurement period*:
 - a. If *Hospice services received by patient any time during the measurement period* equals No, include in *Eligible Population/Denominator*.
 - b. If *Hospice services received by patient any time during the measurement period* equals Yes, do not include in *Eligible Population/Denominator*. Stop processing.
6. Denominator Population:
 - a. Denominator Population is all Eligible Patients in the Denominator. Denominator is represented as Denominator in the Sample Calculation listed at the end of this document. Letter d equals 80 patients in the Sample Calculation.
7. Start Numerator
8. Check *Advance Care Planning discussed and documented; advance care plan or surrogate decision maker documented in the medical record*:
 - a. If *Advance Care Planning discussed and documented; advance care plan or surrogate decision maker documented in the medical record* equals Yes, include in *Data Completeness Met and Performance Met*.
 - *Data Completeness Met and Performance Met* letter is represented as Data

Completeness and Performance Rate in the Sample Calculation listed at the end of this document. Letter a¹ equals 30 patients in the Sample Calculation.

- b. If *Advance Care Planning discussed and documented; advance care plan or surrogate decision maker documented in the medical record* equals No, proceed to *Advance Care Planning discussed and documented in the medical record; patient did not wish or was not able to name a surrogate decision maker or provide an advance care plan*.
9. Check *Advance Care Planning discussed and documented in the medical record; patient did not wish or was not able to name a surrogate decision maker or provide an advance care plan*:
 - a. If *Advance Care Planning discussed and documented in the medical record; patient did not wish or was not able to name a surrogate decision maker or provide an advance care plan* equals Yes, include in *Data Completeness Met and Performance Met*.
 - *Data Completeness Met and Performance Met* letter is represented as Data Completeness and Performance Rate in the Sample Calculation listed at the end of this document. Letter a² equals 10 patients in the Sample Calculation.
 - b. If *Advance Care Planning discussed and documented in the medical record; patient did not wish or was not able to name a surrogate decision maker or provide an advance care plan* equals No, proceed to *Advance Care Planning not documented, reason not otherwise specified*.
10. Check *Advance Care Planning not documented, reason not otherwise specified*:
 - a. If *Advance Care Planning not documented, reason not otherwise specified* equals Yes, include in *Data Completeness Met and Performance Not Met*.
 - *Data Completeness Met and Performance Not Met* letter is represented as Data Completeness in the Sample Calculation listed at the end of this document. Letter c equals 30 patients in the Sample Calculation.
 - b. If *Advance Care Planning not documented, reason not otherwise specified* equals No, proceed to *Data Completeness Not Met*.
11. Check *Data Completeness Not Met*:
 - a. If *Data Completeness Not Met*, the Quality Data Code or equivalent was not submitted. 10 patients have been subtracted from the Data Completeness Numerator in Sample Calculation.

Sample Calculations:

Data Completeness equals Performance Met (a¹ plus a² equals 40 patients) plus Performance Not Met (c equals 30 patients) divided by Eligible Population/Denominator (d equals 80 patients). All equals 70 patients divided by 80 patients. All equals 87.50 percent.

Performance Rate equals Performance Met (a¹ plus a² equals 40 patients) divided by Data Completeness Numerator (70 patients). All equals 40 patients divided by 70 patients. All equals 57.14 percent.

*See the posted measure specification for specific coding and instructions to submit this measure.

NOTE: Submission Frequency: Patient-Process

The measure diagrams were developed by CMS as a supplemental resource to be used in conjunction with the measure specifications. They should not be used alone or as a substitution for the measure specification.