

NOTE: This flow diagram represents an overview of population criteria requirements. *Refer to the eCQM specification for a complete list of data elements included in this measure and required for submission.*

Appropriate Antiemetic Therapy for High- and Moderate-Emetic-Risk Antineoplastic Agents in the Infusion Center

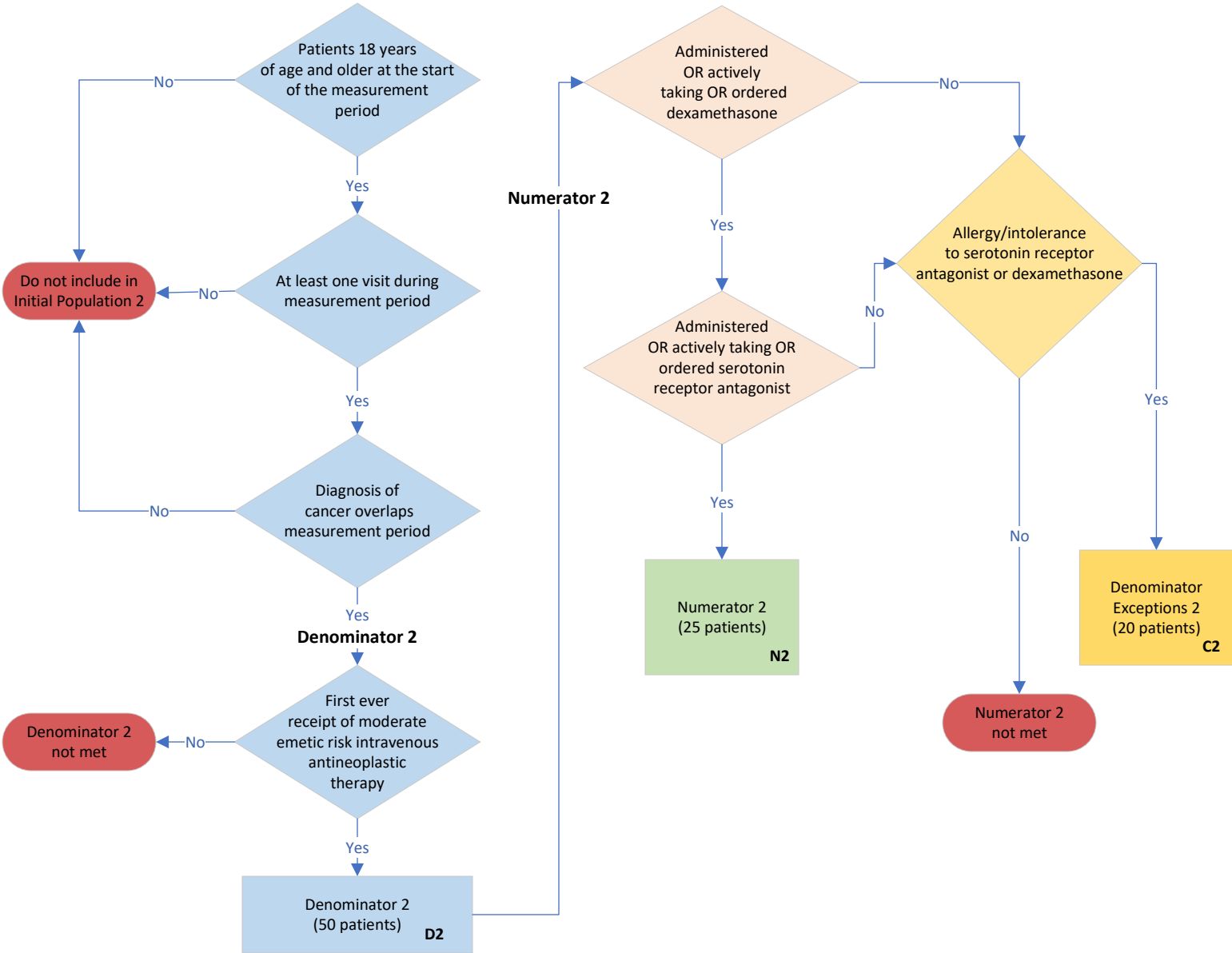
Percentage of cancer patients aged 18 years and older treated with high- or moderate-emetic-risk antineoplastic agents in the infusion center who are administered appropriate pre-treatment antiemetic therapy

This eCQM is a patient-based measure.

Initial Population 1



Initial Population 2



Sample Calculation

Performance Rate * (Population 1 and 2) =

$$\frac{\text{Numerator (N1 + N2= 50 patients)}}{\text{Denominator (D1 + D2= 100 patients) – Denominator Exceptions (C1 + C2 = 40 patients)}} = \frac{50}{60} = 83\%$$

*This eCQM is intended to have one performance rate.